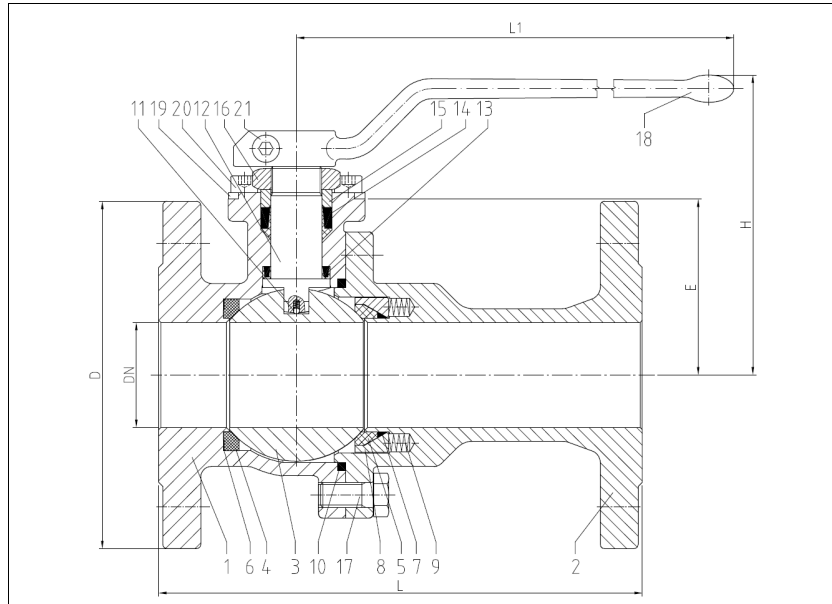


# BALL VALVES INTEC

K224, DN15 - DN100, PN16/40

floating ball, PEEK seated,  
single side spring loaded seat ring



**Flanged ball valve**  
full bore  
face to face acc. to EN 558, GR. 1  
face to face acc. to EN 558, GR. 27  
flanges acc. to EN 1092

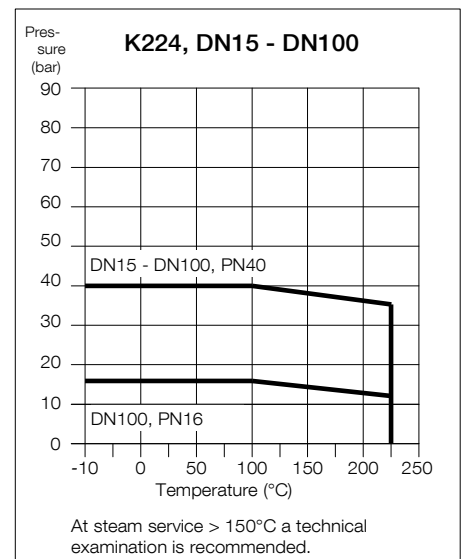
**Specification:**

Two-piece ball valve with flanges acc. to EN 1092, face to face dimensions acc. to EN 558, GR.1/GR.27, full bore, blow-out-proof stem, body material stainless steel (1.4408) or carbon steel (1.0619), antistatic device, free of non ferrous metals, seat full chambered, single side spring loaded seat ring, stem packing Graphite/KFGN/KFAM cone ring system dynamic loaded adjustable, top flange DIN EN ISO 5211, approved by PED, certified acc. to GERMAN clean air act VDI 2440, with lever.

Also possible as high-temperature version up to +260°C.

Marking: INTEC K224

No.	Part	Material	Material
<b>Standard design</b>			
1	body	1.0619	1.4408
2	cap	1.0619	1.4408
3	ball	1.4408	
4	seat	PEEK / PEEK mod.	
5	spring loaded seat	PEEK / PEEK mod.	
6	seat back seal	Graphite	
7	seat seal	KF	
8	seat bearing ring	1.4571/1.4404	
9	spiral spring	1.4401	
10	body seal	KF	
11	antistatic element	1.4401/1.4571/1.4404	
12	stem	1.4462	
13	below seal	KFGN/Graphite	
14	upper seal	KFAM/Graphite	
15	upper stem bearing	PEEK	
16	hex. nut self-locking	A2/1.4301	
17	hex. screw	A4-70	
18	lever	1.4408/1.4308/steel zincplated	
19	stopper	1.4301	
20	allen screw	A2-70	
21	allen screw	A2-70	
<b>Fire-Safe design</b>			
7	seat seal	Graphite	
9	spiral spring	Inconel X750	
10	combined body seal	KF-Graphite	
12	Fire-Safe seal	Graphite	
	ring	1.4571/1.4404	
	thrust washer	PEEK	



**Dimensions**

DN mm	PN	dimensions (mm)						top flange ISO	torque Nm**	ca. weight kg	
		H	L1	L GR.1	L GR.27	D	E			GR.1	GR.27
15	40	95	160	130	115	95	39.5	F05	12	3.0	2.9
20	40	105	160	150	120	105	46	F05	16	4.0	3.7
25	40	114	180	160	125	115	49.5	F05	23	4.9	4.6
32	40	130	180	180	130	140	59	F05	35	6.7	6.4
40	40	135	300	200	140	150	76	F07	70	9.3	8.8
50	40	143	300	230	150	165	83.5	F07	101	13.0	12.1
65	40	155	300	290	170	185	94	F07	180	17.0	16.0
80	40	197	500	310	180	200	102.5	F10	327	26.0	23.0
100	16	215	500	350	190	220	120.5	F10	257	33.0	30.0
100	40	215	500	350	190	235	120.5	F10	517	34.0	32.0

\*\* Necessary torque measured with treated water at Δ P acc. to pressure class and room temperature

**Ordering example:**  
INTEC K224, DN50, PN40, GR.27,  
1.4408, Fire-Safe

Subject to technical modification. 10/2019